



Thermographic Report

Survey Date	
Report Date	
Site Engineer(s):	
Report Author:	
Accreditation:	
Project No.	

Contact Details

01376 533979 | www.texodroneservices.co.uk

UK Head Office

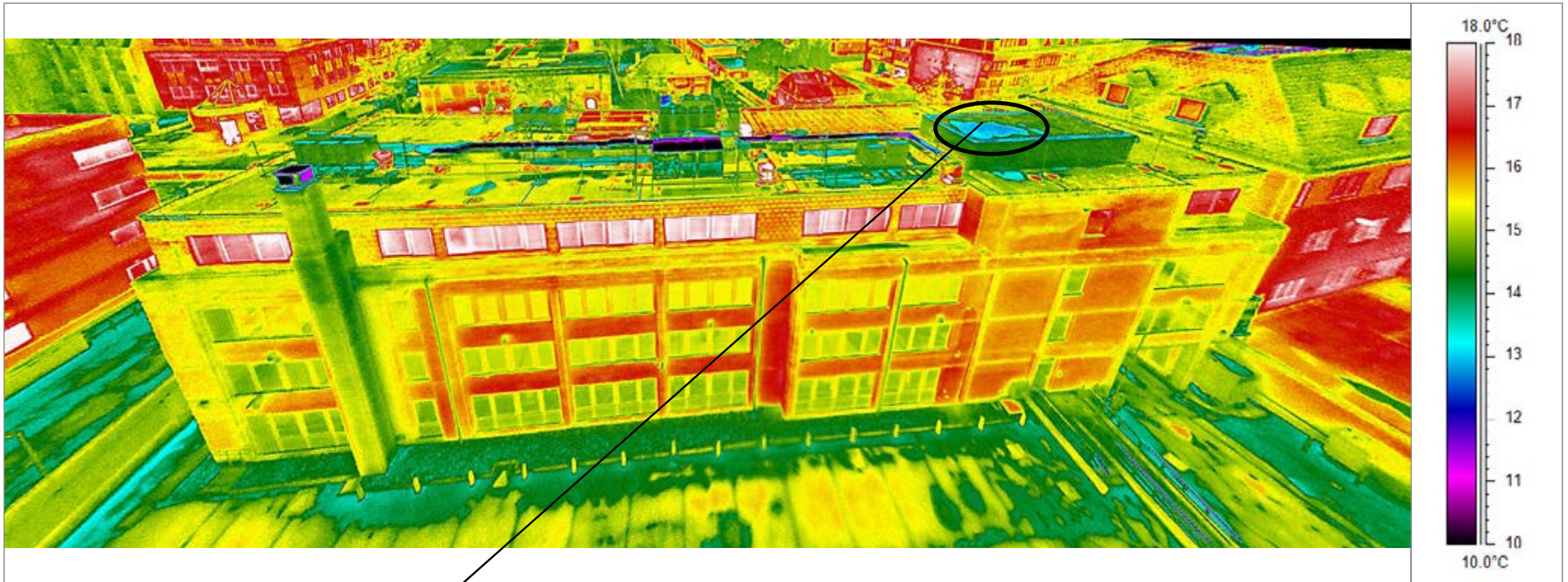
8 Stepfield, Witham, Essex, CM8 3TH

Scottish Office

Provender House, 37 Waterloo Quay, Aberdeen, Scotland AB11 5BS



External | Roof / Elevations from Car Park

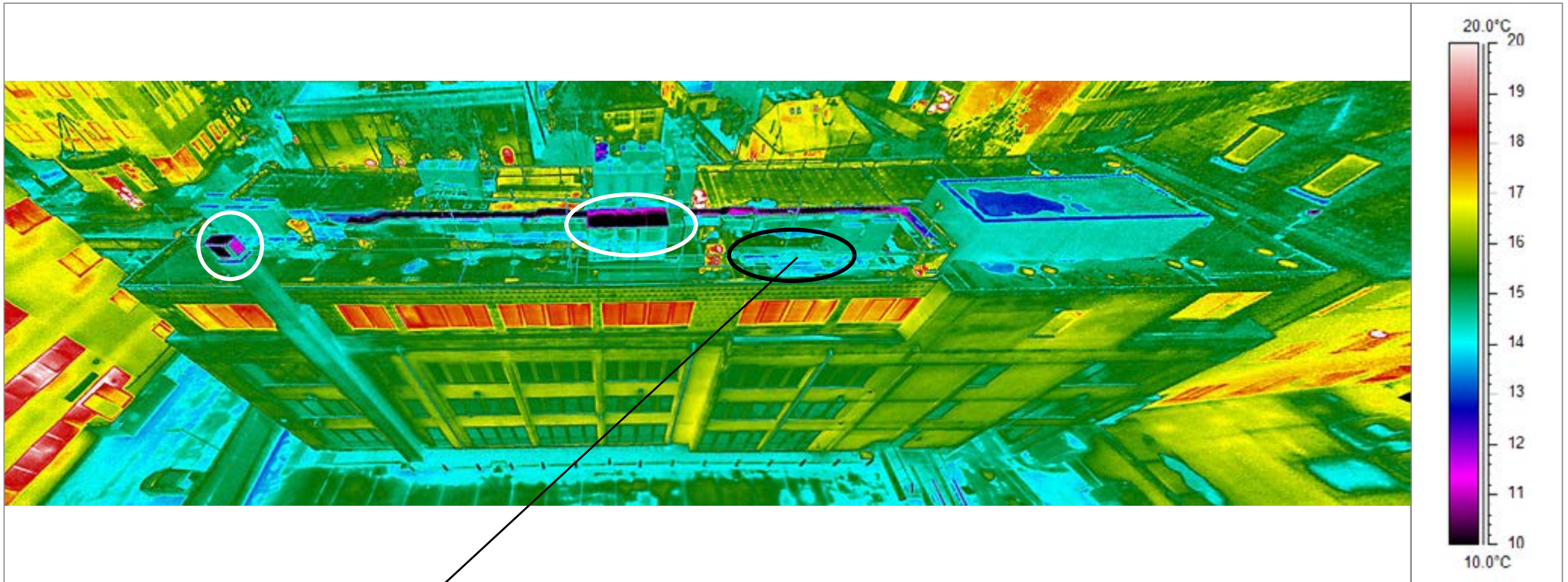


Air Temp: 8°C	Ref. Air Temp: -23°C	Emissivity: .92	Dist. to Target: 20m	Wind Speed: 2.5-3m/s
---------------	----------------------	-----------------	----------------------	----------------------



When first observing a thermogram, it is important to look at the scene in general and not be drawn into finding so called 'hotspots'. Instead, try to observe different and otherwise inconsequential details such as the colour of the ground and vegetation which are after all natural and unheated objects. This gives a reference point to start judging the effectiveness of the building elevations. Several areas of standing water can clearly be seen, as indicated in the circled area.

External | Roof / Elevation from Car Park

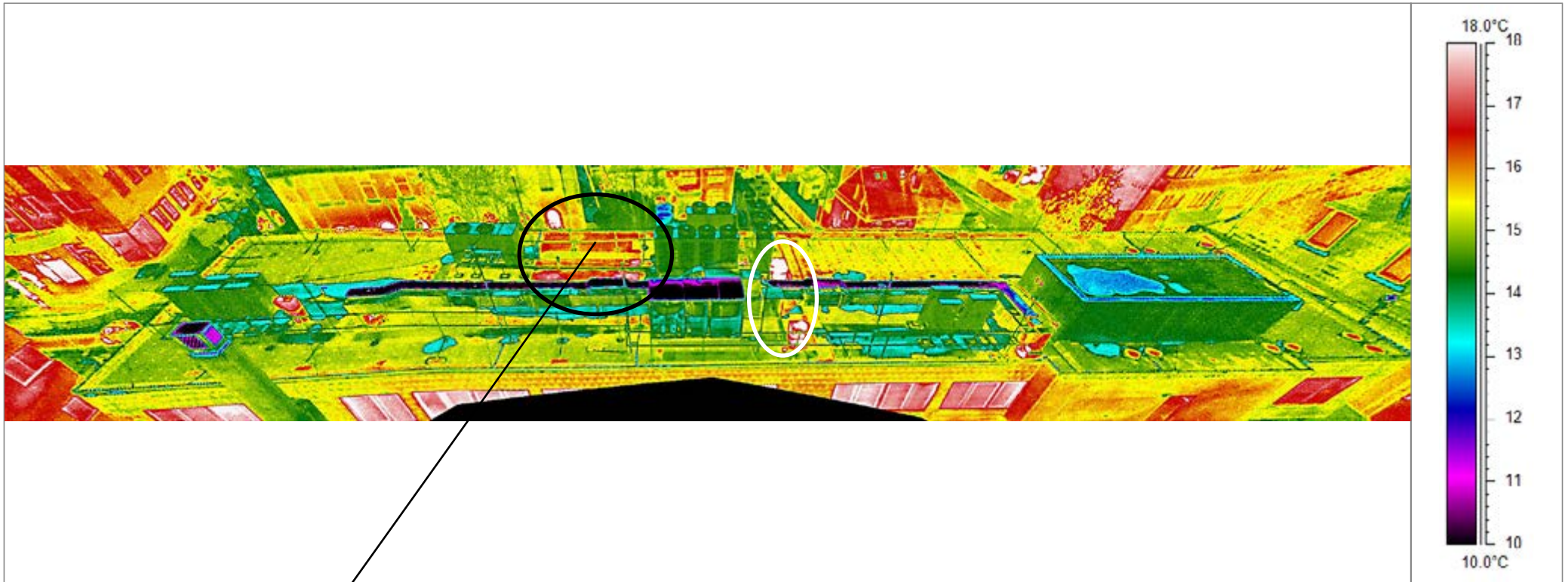


Air Temp: 8°C	Ref. Air Temp: -23°C	Emissivity: .92	Dist. to Target: 20m	Wind Speed: 2.5-3m/s
---------------	----------------------	-----------------	----------------------	----------------------



White circled areas show reflection of cold sky and can be disregarded from the report.

External | Roof shot from Car Park

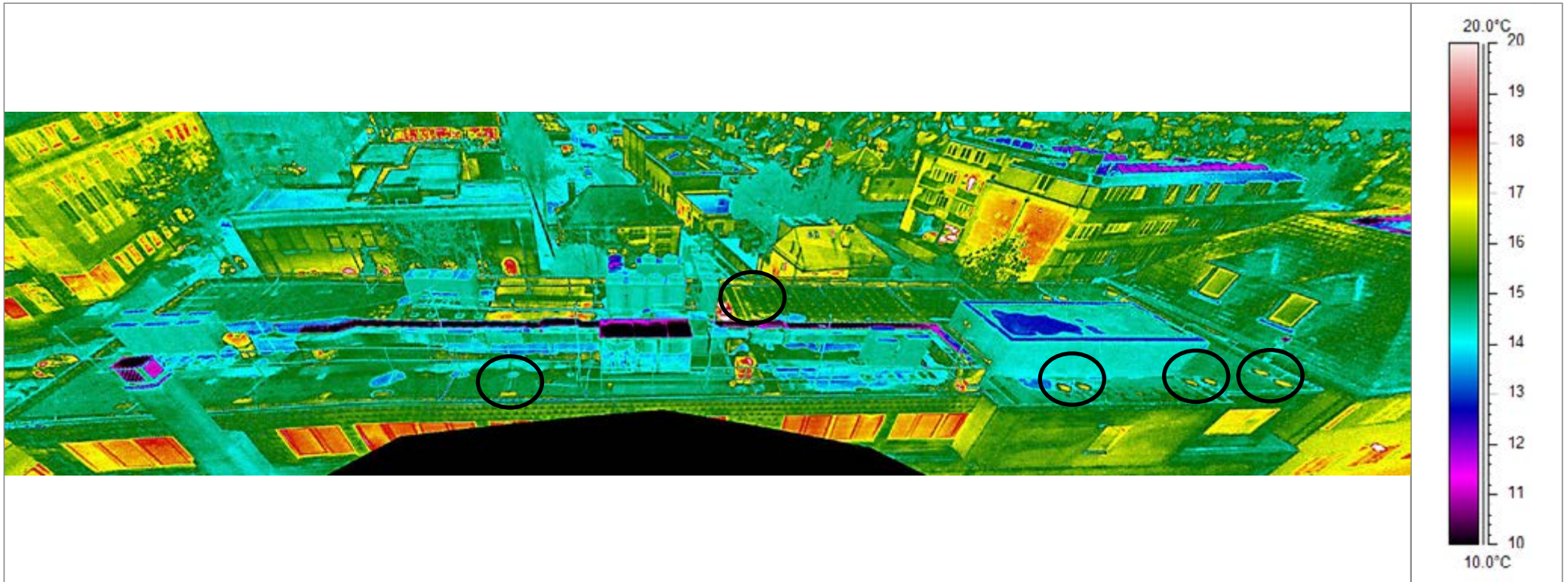


Air Temp: 8°C	Ref. Air Temp: -23°C	Emissivity: .92	Dist. to Target: 20m	Wind Speed: 2.5-3m/s
---------------	----------------------	-----------------	----------------------	----------------------



Black circled area potentially shows area of heat loss, which would suggest poor missing insulation. This could also be water ingress beneath the roof covering which shows warm due to higher thermal capacitance of moisture. White circled area shows vents, which can be disregarded.

External | Roof shot from Car Park



Air Temp: 8°C	Ref. Air Temp: -23°C	Emissivity: .92	Dist. to Target: 20m	Wind Speed: 2.5-3m/s
---------------	----------------------	-----------------	----------------------	----------------------



Several areas have been highlighted which show areas of possible discontinuity of insulation.